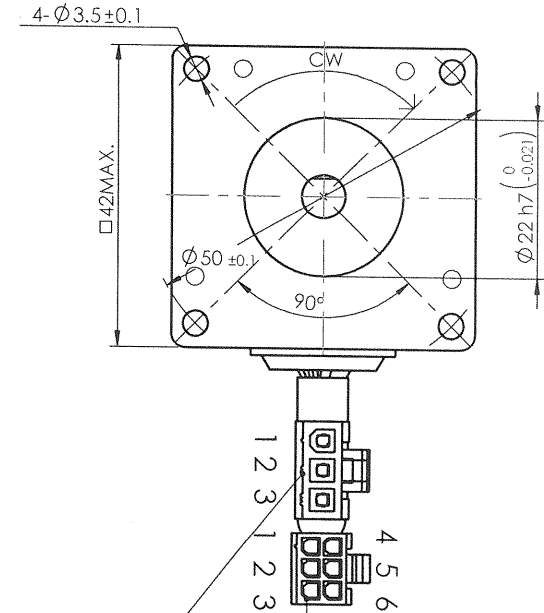
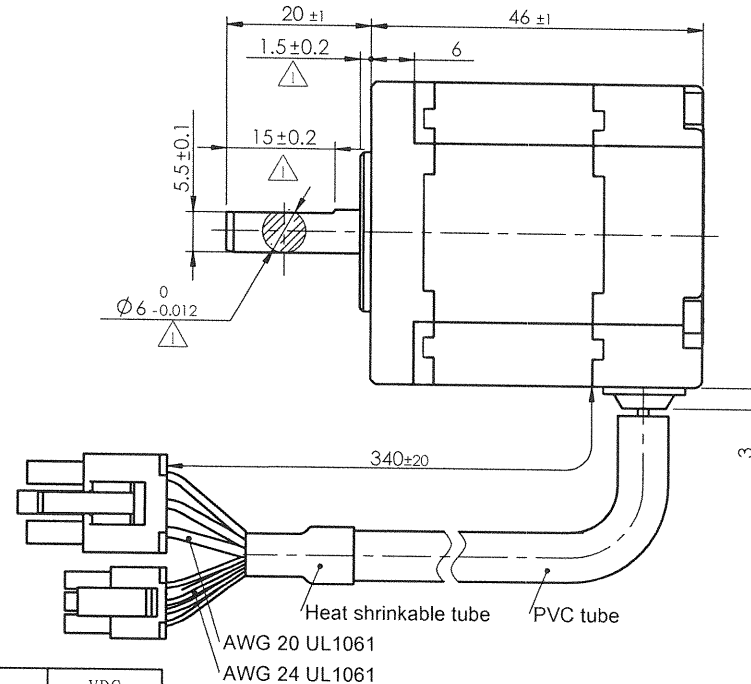
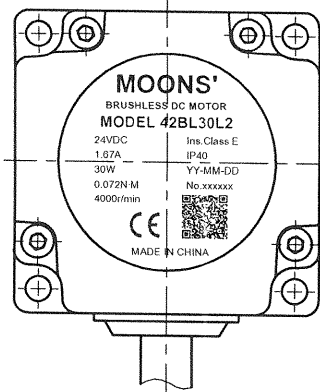


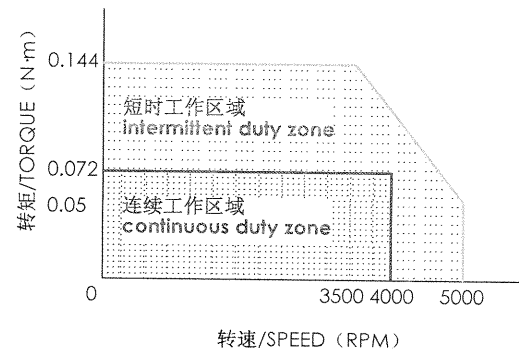
4611130000001



规格 Specifications

1	额定电压/Rated power supply	24	VDC
2	额定输出功率/Rated output power	30	W
3	极数/Poles number	6	
4	相数/Phase number	3	
5	额定转速/Rated rotational speed	4000	RPM
6	最大转速/Maximum speed	5000	RPM
7	额定转矩/Rated torque	0.072	N·m
8	额定电流/Rated winding current	1.67	A
9	线反电势系数/Voltage constant±10%	2.95	Vrms/krpm
10	惯量/Moment of inertia	0.0388x10 ⁻⁴	kg·m ²
11	线电阻Ph/resistance±10% at 20℃	1.34	Ω
12	线电感Ph/inductance±30% at 1KHz 20℃	1.15	mH
13	电机质量/Motor mass	0.32	kg
14	绝缘等级/Insulation class	E	120℃
15	防护等级/Protective enclosure rating	IP40	

转矩-转速特性 Torque-speed specifications



Housing:
MOLEX P/N 39-01-4031 (Write)
Terminal:
MOLEX P/N 39-00-0207

编号 No.	线色 COLOR	定义 FUNCTION
1	蓝/blue	W
2	橙/orange	U
3	黄/yellow	V

Housing:
MOLEX P/N 43025-0600 (Black)
Terminal:
MOLEX P/N 43030-0005

编号 No.	线色 COLOR	定义 FUNCTION
1	红/red	VCC(+5V)
3	黄/yellow	Ilv
4	蓝/blue	Ilw
5	黑/black	GND
6	橙/orange	Ilu

Unit: mm

第一角画法
FIRST ANGLE METHOD

未注线性与角度尺寸公差
Tolerances for linear and angular dimensions without
individual tolerance indications

GB/T 1804-m eqv ISO 2768-1: m

未注形状与位置尺寸公差
Geometrical tolerance for features without
individual tolerance indications

GB/T 1184-K eqv ISO 2768-2: K

批准 Approve

标准化 Standard

工艺 Technology

审核 Check

设计 Design

NAMES

SIGNATURE

DATE

MOONS'

Shanghai Moons' Electric Co., Ltd.

This document is released for information only. Its reproduction in whole or in part or its dissemination to third parties is prohibited. All trademarks and registered trademarks appearing on this document are the property of their respective owners.

Type: 42BL30L2

Rev. D SCALE 1:1 Sheet 1 of 1

G		
F		
E		
D	1.5±0.1、15±0.1、Ø6 0/-0.006	2014-04-14
C	变更规格 Change specifications	2013-03-22
B	更改引出线规格 Change lead wire	2012-04-26
A	原始版本 Original revision	2011-12-5
REV.	版本记录 REVISION RECORD	DATE

UNLESS OTHERWISE SPECIFIED